



COMMONWEALTH
GOLF CLUB

MELBOURNE AUSTRALIA



CORPORATE GOLF
2011-2012



CORPORATE GOLF

Commonwealth Golf Club is proud of its reputation as a quality corporate golf destination.

Our friendly and experienced staff are happy to help you organise every facet of your next corporate golf event.

On The Day:

Driving range – for a pre-game warm-up.

Welcome by our Golf Professional including a full description of the event of the day and course layout.

Full equipment hire – to help your guests play to their full potential.

Novelty events – including nearest the pins, longest drives and more...

Refreshment cart – can be tailored to your needs.

Golf Results – Collection of score cards and processing at day end.

Trophies – A large range is available from our fully stocked golf shop.

In the Clubhouse:

Commonwealth is renowned as a leader in the presentation of exquisite food and fine wine. Many different catering and beverage options are available. The following selections are typical of catering after golf:

Sumptuous 2 course lunch/3 course dinner; gourmet buffet;

BBQ; handmade canapés & gourmet finger food

In the Golf Shop:

Our Golf Services Manager and staff are keen to assist you with any of your needs. Some of the services on offer are:

Pre-game coaching clinics.

‘Beat the Pro’ on one of our famous Par 3’s.

Joining each group for one or more holes during their round and giving advice.

Putting competitions.



EVENT RUNDOWN

A general format for a corporate golf event at Commonwealth Golf Club is as follows:

Events can also be tailored to suit individual needs

AM FIELD

7:00am: Registration & Light breakfast

7:45am: Player briefing & move to tees

8:00am: Shotgun start

10:00: Drinks cart begins run

12:00pm: Drinks cart finishes run

12:30pm: Golf concludes

1:00pm: Pre-lunch drinks in the members lounge

1:30pm: Lunch commences in the dining room

3:30pm: Event concludes

PM FIELD

11:00am: Registration & Light lunch

12:45pm: Player briefing & move to tees

1:00pm: Shotgun start

1:30pm: Drinks cart begins run

4:45pm: Drinks cart finishes run

5:30pm: Golf concludes

6:00pm: Pre-dinner drinks in the members lounge

6:30pm: Dinner commences in the dining room

9:30pm: Event concludes

Please note that these times can vary depending on the time of year and golf competition being played.

Team Ambrose, 4BBB, Par and Individual Stableford are the only competitions to be played. Single stroke play is not permitted.



CORPORATE PACKAGES

Commonwealth primarily plays host to corporate golf events on Mondays, however we can accommodate smaller groups on Fridays.

Prime Seasons

February - May & October - December

AM Groups

Minimum 50 players: Shot gun start at 8.00 am.

PM Groups

Minimum 72 players: Shot gun start at 1.00 pm.

Mid Season

June - September

AM Groups

Minimum 28 players: Shot gun start at 7.30 am.

PM Groups

Minimum 48 players: Shot gun start at 12.30 pm.

There are opportunities for smaller groups to play at Commonwealth on other days, please contact our Golf Shop for details:

golf@commonwealthgolf.com.au



PACKAGE PRICES

Persimmon Packages

AM Package

Muffins, Tea & Coffee, golf and 2 course lunch
\$165 per person

PM Package #1

Light sandwich lunch, golf, and handmade canapés
\$175 per person

PM Package #2

Light sandwich lunch, golf and 3 course dinner
\$195 per person

Graphite Packages

AM Package

Muffins, Tea & Coffee, golf and 2 course lunch, Range Balls & Hand Buggies, Course Guide
\$175 per person

PM Package #1

Light sandwich lunch, golf, and handmade canapés
Range Balls & Hand Buggies, Course Guide
\$190 per person

PM Package #2

Light sandwich lunch, golf and 3 course dinner
Range Balls & Hand Buggies, Course Guide
\$210 per person



PACKAGE PRICES

Titanium Packages

AM Package

Muffins, tea & coffee, golf and 2 course lunch range balls & hand buggies, course guide booklet & course playing tips from Club Professional, beverages* and a memento of the day at Commonwealth.
\$225 per person

PM Package #1

Light sandwich lunch, golf, and handmade canapés range balls & hand buggies, course guide booklet & course playing tips from Club Professional, beverages** and a memento of the day at Commonwealth.
\$250 per person

PM Package #2

Light sandwich lunch, golf and 3 course dinner range balls & hand buggies, course guide booklet & course playing tips from Club Professional, beverages** and a memento of the day at Commonwealth.
\$270 per person.

*Beverages (Beer, Wine and Soft drink) in AM package include on course (3 services by cart during play) after game and luncheon drinks (2 ½ hours).

**Beverages (Beer, Wine and Soft drink) in PM packages include luncheon, on course (3 services by cart during play) after game and dinner (3 hours).



DRESS REGULATIONS

Please ensure that all your guests are aware and adhere to the dress code
The following images show what is acceptable on course and in our clubhouse.
Commonwealth has great pride in our dress standards, hence our regulations will be enforced

SHORTS

ACCEPTABLE



TAILORED CUFFED SHORTS

UNACCEPTABLE



CARGO TOO LONG TOO SHORT

TROUSERS

ACCEPTABLE



PANTS PLUS FOURS

UNACCEPTABLE



DENIM/JEANS CARGO ELASTIC WAIST

SHIRTS

ACCEPTABLE



COLLAR SKIVVY

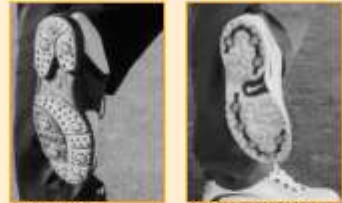
UNACCEPTABLE



NO COLLAR EXCESSIVE LOGO HANGING OUT

COURSE - SHOES & ACCESSORIES

ACCEPTABLE



SOFT SPIKE SPORT - GOLF SHOE

UNACCEPTABLE



JOGGERS CASUAL MOBILE PHONE

CAP BACK TO FRONT

DRESS REGULATIONS

Please ensure that all your guests are aware and adhere to the dress code
The following images show what is acceptable on course and in our clubhouse.
Commonwealth has great pride in our dress standards, hence our regulations will
be enforced

SOCKS

ACCEPTABLE



LONG



PLAIN WHITE



GOLF CLUB LOGO



ANKLET SOCKS

UNACCEPTABLE



PUSHED DOWN



STRIPED



COLOURED



SOCKETTES

CLUBHOUSE - SHOES & ACCESSORIES

ACCEPTABLE



SOFT SPIKE



CASUAL



SPORT - GOLF SHOE

UNACCEPTABLE



METAL SPIKE



JOGGERS



CAP

MOBILE PHONE

The friendly staff in our fully stocked golf shop will ensure that all your guests are
dressed appropriately upon arrival



PROFESSIONAL SERVICES

Our Club's Teaching Professionals Sandy Jameison and John Wade are more than happy to help with your day. Their friendly demeanour and golfing expertise is a fun and welcome addition to any corporate event.

The services of the club pro are included in our packages. There are many ways our pro can assist your day, two of the more popular options are 'beat the pro' on one of our par threes, or having course tips on a different holes for each group.

Lessons are also available for purchase and are a great prize to give out at the end of your day.





PERSONALISING YOUR DAY

ON COURSE SIGNAGE FOR CORPORATE DAYS

Normal entitlement

- 4 Signs [1st & 10th tees, 18th green, practice tee in driveway]
- Signs and the appropriate stakes required to erect them are to be clearly marked and delivered to the Club by no than the Thursday prior to the event.
- Club Staff will erect the signage prior to tee off and dismantle the signage which will be available for collection from the day following the event from the Club office.

Display items

- Where possible our staff will assist in organising other displays on the course such as cars etc.

Additional Signage

- It may be possible to erect additional signage if required, which may incur additional costs to cover the staff labour involved.
- The Club will not accept any liability whatsoever for any damage to signage or display items.

OTHER PERSONALISED ITEMS AVAILABLE

Commonwealth Golf Club offers the following services to reduce the time and effort required by your staff to arrange a successful and memorable event, Prices for these items vary - please request a quote.

- Corporate Golf Day Invitations – send your guests a stylish, personalised invitation.
- Comprehensive running sheet of the day's activities.
- Golf balls, shirts and other gifts embossed with your company logo.
- Photography of your event.
- Scorecards printed with your company logo and players names and handicaps
- Information booklets with course maps, days events, sponsors logos, lunch/ dinner menus, company information etc.
- Personalised menus on each table for your after golf meal



FURTHER INFORMATION

Site inspections are available 7 days a week by appointment

CONTACT

Chris Poulton

Operations Manager

Email: chris@commonwealthgolf.com.au

Phone: (03) 9575 0444 (ext 2)

ADDRESS

Glennie Avenue, South Oakleigh 3167

Melway Reference 78 E3

Website: www.commonwealthgolf.com.au

Commonwealth Golf Club is approximately 20 - 30 minutes from the city by car. Travel from the city along the Monash Freeway to the Warrigal Rd exit, turn right at Warrigal Rd then travel approximately 6km. After crossing Centre Rd, Glennie Ave is the second street on the left, continue all the way along Glennie Ave to the main entrance of the golf club.

